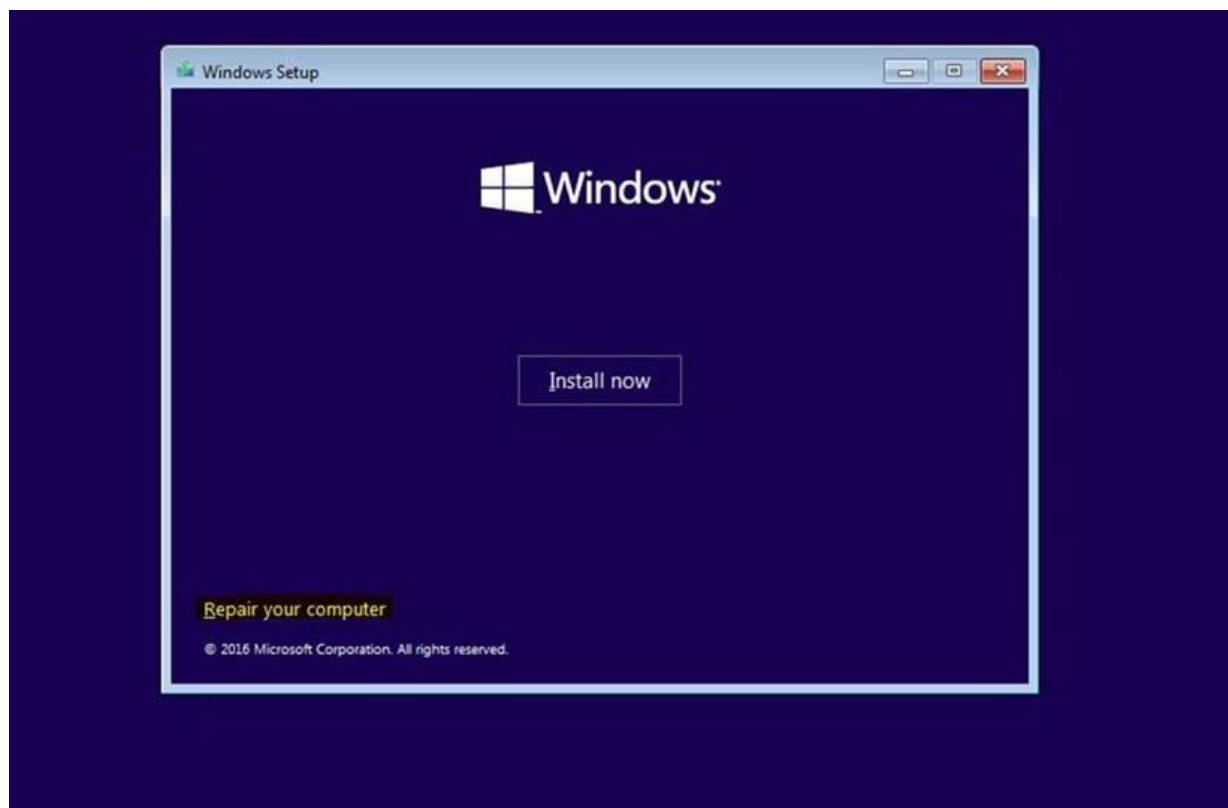
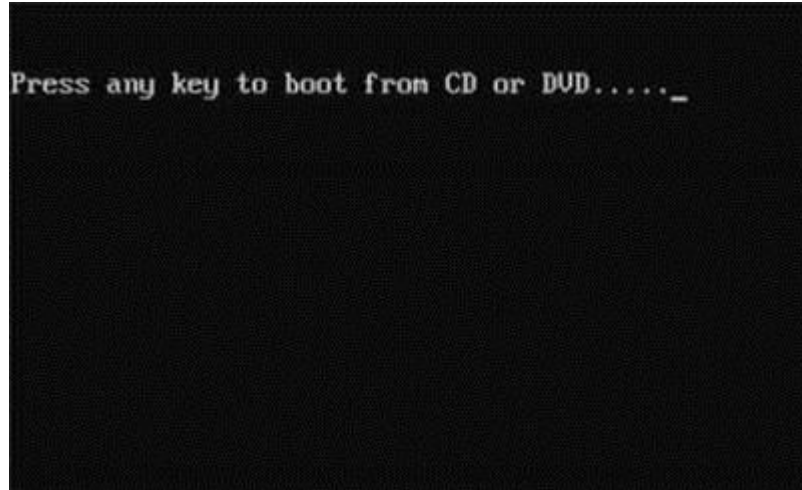


1. Boot from install media using Windows Disc.

Select Troubleshoot (Reset your Pc and see advanced options) -> command prompt



Choose an option



Continue
Exit and continue to Windows 10



Turn off your PC



Use a device
Use a USB drive, network connection,
or Windows recovery DVD



Troubleshoot
Reset your PC or see advanced options

← Advanced options



System Restore
Use a restore point recorded on your
PC to restore Windows



Command Prompt
Use the Command Prompt for
advanced troubleshooting



System Image
Recovery
Recover Windows using a specific
system image file



UEFI Firmware Settings
Change settings in your PC's UEFI
firmware



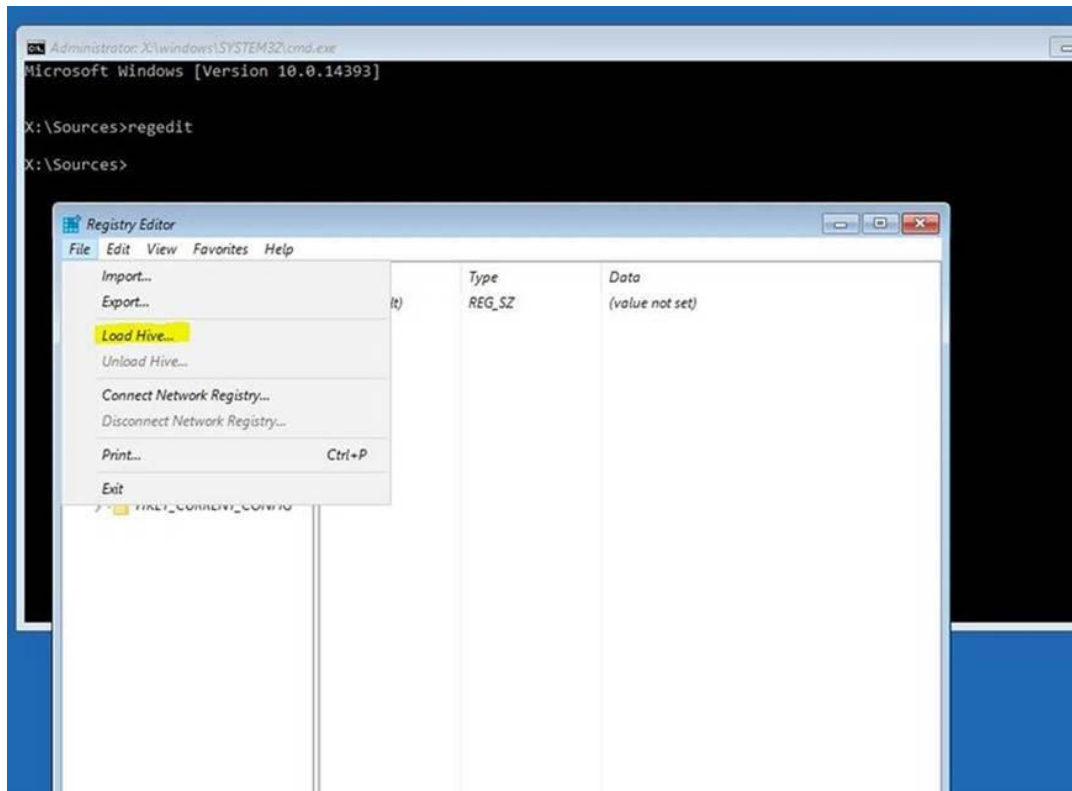
Startup Repair
Fix problems that keep Windows from
loading



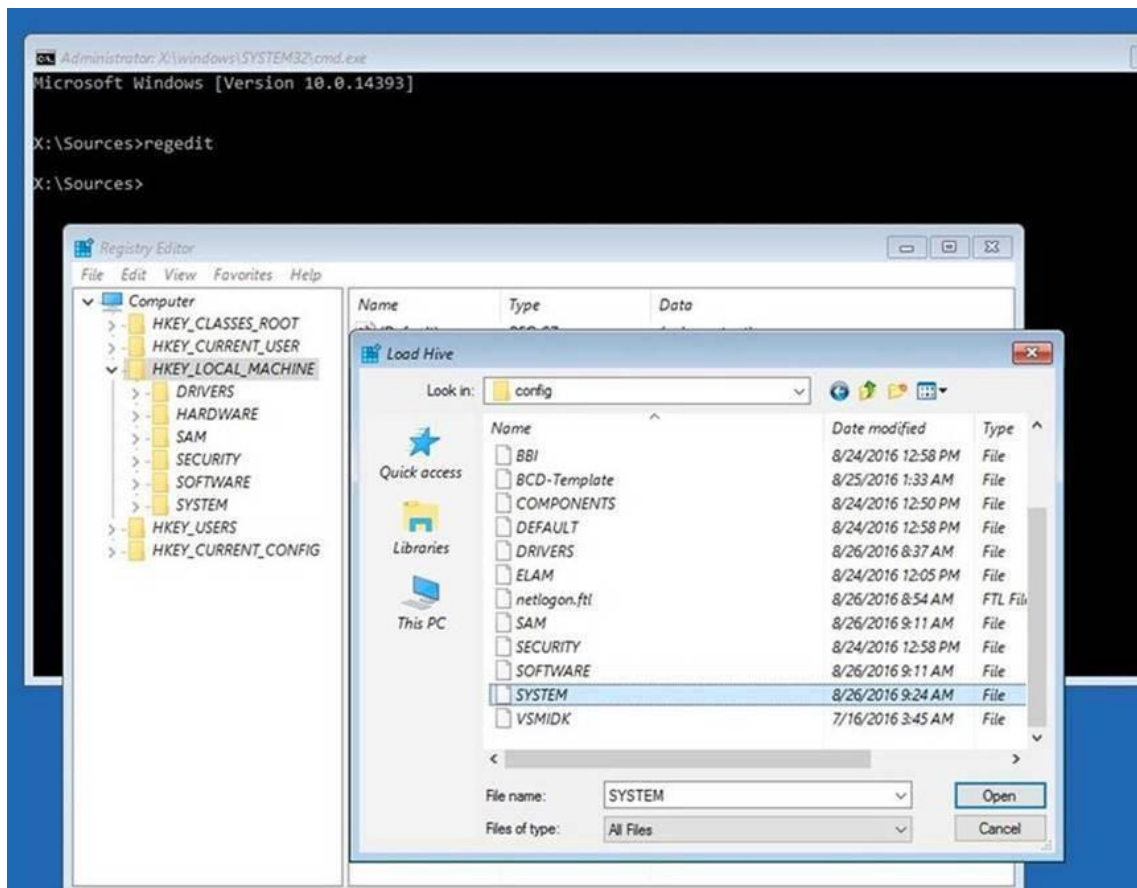
Go back to the
previous build

2. At the command prompt, type regedit.

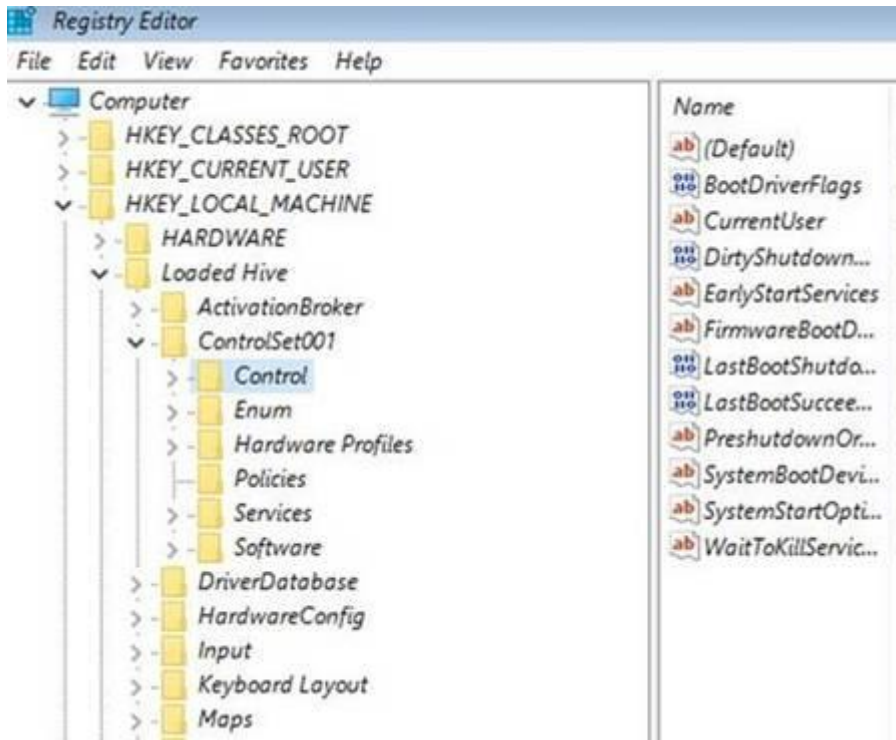
3. Load the hive selecting HKLM, going to File -> Load Hive



4. Browse to **C:\Windows\System32\config** , select the file named as **SYSTEM**



5. Go to the loaded hive and then to the path *ContolSet001 | Control | ProductOptions*



6. Edit the Multi-String value data under *ProductSuite*

You will notice Terminal Server and Personal under it.

Remove **Personal**

7. Exit and continue to windows 10 and login to the domain

